



35 Stewart Close, Fifield, Maidenhead, SL6 2PD
£550,000

 **HORLER**

35 Stewart Close, Fifield, Maidenhead, SL6 2PD

Nestled in the picturesque village of Fifield, between the historic town of Windsor and the conveniently located Maidenhead, this charming three-bedroom family home on Stewart Close offers a perfect blend of comfort and practicality. The property is ideally situated near local amenities, schools, and transport links, making it an excellent choice for families and commuters alike. With a secluded rear garden, integral garage and your own driveway with offroad parking for a number of vehicles, please don't hesitate - call today on 01753 621234 to book a viewing.



Property Summary

Nestled in the picturesque village of Fifield, between the historic town of Windsor and the conveniently located Maidenhead, this charming three-bedroom family home on Stewart Close offers a perfect blend of comfort and practicality. The property is ideally situated near local amenities, schools, and transport links, making it an excellent choice for families and commuters alike.

Upon entering, you are welcomed by a spacious living room that provides a warm and inviting atmosphere. Adjacent to this is a separate dining room, which features French doors that open onto a delightful back garden, perfect for entertaining or enjoying a quiet evening outdoors. The large family kitchen is well-equipped and designed for both functionality and style, while a convenient downstairs washroom and an integral garage add to the home's practicality.

The first floor boasts three generously sized bedrooms, each benefiting from under-eave storage, ensuring ample space for personal belongings. A family bathroom and a separate WC complete this level, providing convenience for the whole family.

The property is further enhanced by a large, fully enclosed, and secluded rear garden, which features a paved patio area ideal for al fresco dining, alongside a lush lawn that offers a perfect space for children to play or for gardening enthusiasts to indulge their passion.

To the front, a driveway leads to the garage and provides off-road parking for several vehicles, complemented by a well-maintained lawn and attractive flowerbeds. This delightful home in Fifield is a wonderful opportunity for those seeking a peaceful village lifestyle with easy access to urban conveniences.

General Information

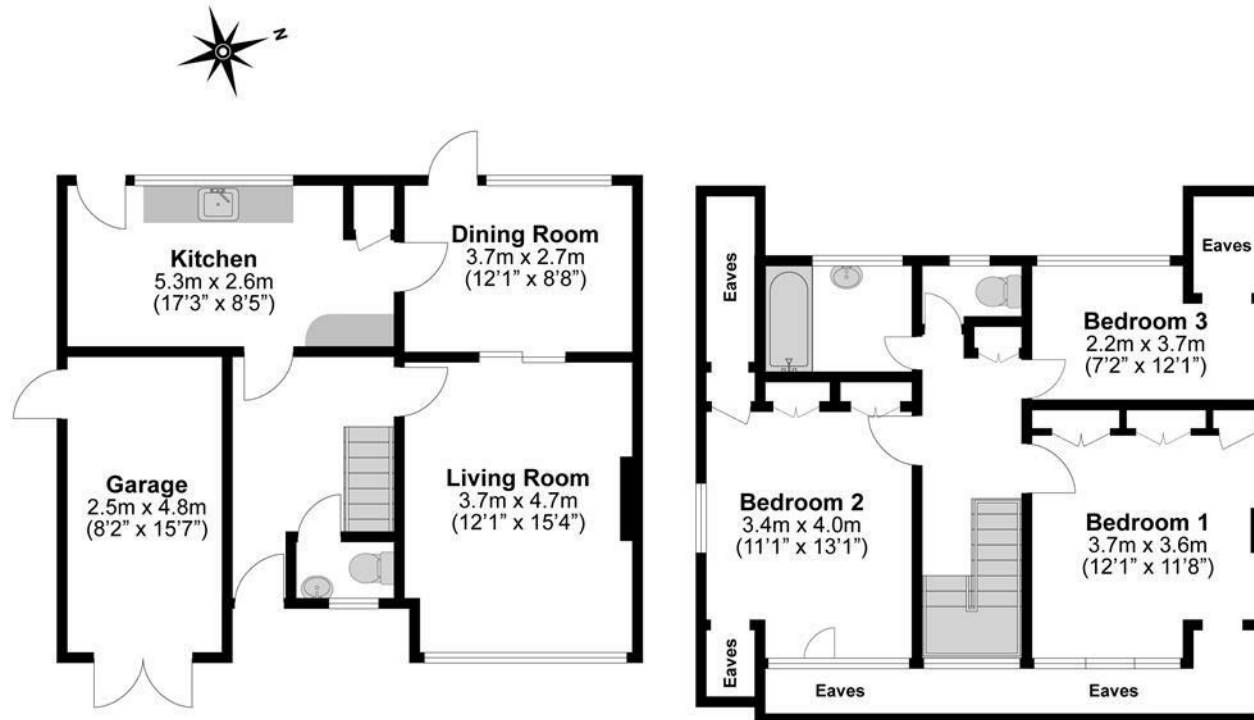
Council Tax Band 'E'

Legal Note

Although these particulars are thought to be materially correct their accuracy cannot be guaranteed and they do not form part of any contract*







**Illustrations are for identification purposes only,
measurements are approximate, not to scale.**